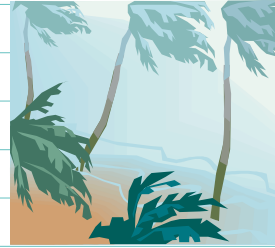




Late Summer/Early Fall 2010 Newsletter

Hurricane/Disaster Preparedness

We are in the middle of hurricane season. Be sure you and your pet are prepared for any situation that may arise. Below is a "Pet Plan" from the National Hurricane Center (http://www.nhc.noaa.gov/HAW2/english/prepare/pet_plan.shtml)



Contact your veterinarian or local humane society for information on preparing your pets for an emergency.

BEFORE THE DISASTER

- Make sure that your pets are current on their vaccinations. Pet shelters may require proof of vaccines.
- Have a current photograph
- Keep a collar with identification on your pet and have a leash on hand to control your pet.
- Have a properly-sized pet carrier for each animal - carriers should be large enough for the animal to stand and turn around.
- Plan your evacuation strategy and don't forget your pet! Specialized pet shelters, animal control shelters, veterinary clinics and friends and relatives out of harm's way are ALL potential refuges for your pet during a disaster.

If you plan to shelter your pet - work it into your evacuation route planning.

DURING THE DISASTER

- Animals brought to a pet shelter are required to have: Proper identification collar and rabies tag, proper identification on all belongings, a carrier or cage, a leash, an ample supply of food, water and food bowls, any necessary medications, specific care instructions and news papers or trash bags for clean-up.
- Bring pets indoor well in advance of a storm - reassure them and remain calm.
- Pet shelters will be filled on first come, first served basis. Call ahead and determine availability.

AFTER THE DISASTER

- Walk pets on a leash until they become re-oriented to their home - often familiar scents and landmarks may be altered and pets could easily be confused and become lost. Also, downed power lines, reptiles brought in with high water and debris can all pose a threat for animals after a disaster.
- If pets cannot be found after a disaster, contact the local animal control office to find out where lost animals can be recovered. Bring along a picture of your pet if possible.
- After a disaster animals can become aggressive or defensive - monitor their behavior.

Don't forget your pet when preparing a family disaster plan.

PET DISASTER SUPPLY KIT

- Proper identification including immunization records
- Ample supply of food and water
- A carrier or cage
- Medications
- Muzzle, collar and leash

OFFICE HOURS:

MONDAY-FRIDAY FROM 8-12
AND 1-5 CLOSED FOR LUNCH
SATURDAY FROM 8-11:30
CLOSED ON ALL MAJOR HOLIDAYS

We offer a 24-hour emergency service to our clients. After-hours emergencies please call (409) 384-8731. The answering machine will give you a phone number to contact one of our on-call veterinarians.

Hospital points of Interest

- ✓ 24-hour emergency service
- ✓ Walk-ins Welcome
- ✓ Covered large animal facility
- ✓ Indoor heat/air-conditioned runs
- ✓ Up-to-date anesthesia
- ✓ Blood profiles for your pets health and safety
- ✓ ECG and Ultrasound capabilities
- ✓ Radiograph capabilities
- ✓ Equine Center

Fain & Smathers Veterinary Hospital, Inc

2378 US HWY 190 West
Jasper, Texas 75951
(409) 384-8731

www.fainandsmathersvet.com

Dr. David C. Fain
Dr. Royce D. Smathers
Dr. Lindsay R. Syler

HORSE OWNERS.....We now offer

Fleas and Flea Control 101



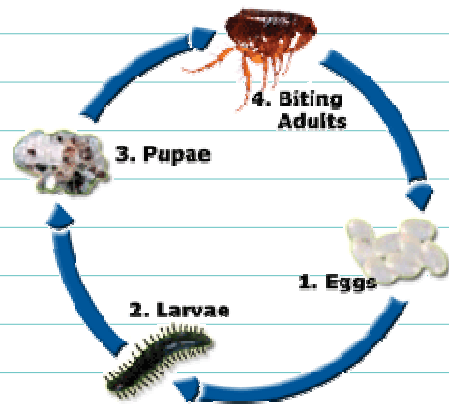
Besides being a big annoyance to you and your pets, fleas also can lead to other diseases such as tapeworms, bacterial disease, and flea allergy dermatitis (FAD) which is an allergic condition that can result in hair loss, skin inflammation and irritation, and severe scratching.

In addition to causing itching and discomfort, fleas also can transmit disease-causing organisms and in high numbers can cause anemia due to their blood sucking abilities and blood loss from your pet. This anemia can be fatal if your pet is young, feeble, and/or small in size.

FLEA LIFE CYCLE

Life cycle can take 8 to 12 months depending on temperature and humidity.

1. **Eggs** - Female lays 40-50 eggs per day on the host (dog, cat, etc). Eggs fall off into the environment. Eggs hatch into larvae within 2 weeks.
2. **Larvae** - Larvae feed on flea fecal matter in the environment. Larvae can ingest tapeworm eggs.
3. **Pupae** - Within a week, larvae form a cocoon and pupate. Adult fleas emerge from cocoon and begin feeding as soon as a host is found.
4. **Biting Adults** - Adult fleas feed on host. Females need blood meal to reproduce. Fleas can transmit disease-causing organisms during feeding.



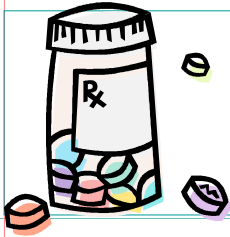
In order to properly treat a flea infestation, it is important to treat both the premises in or on which your pet(s) live as well as your pets, themselves.

Environmental flea control starts with a licensed professional exterminator or "at-home" treatments. If doing the treatments yourself, please be sure to READ THE LABEL! Certain parasiticides can be toxic to our pets if they ingest, touch, or inhale the product.

Flea control products for your pet include the below products. Please consult one of our veterinarians or staff members to assist you in selecting the best product for you and your pet.

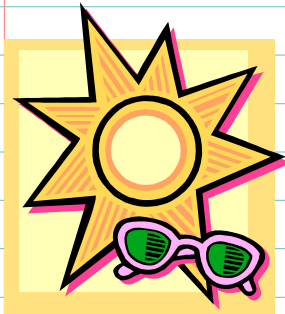
- **Comfortis** ("The Flea Pill")—This is a monthly oral product for dogs that treats adult fleas. It starts killing fleas within 30 minutes after administration and kills fleas before they can lay eggs. It is necessary to give this product with a meal. It is not safe for seizure patients or patients undergoing current heartworm treatment. It should not be given to pregnant or lactating females. Dogs must be 14 weeks and older and over 5 pounds to take this product.
- **Vectra**—This product is a topical for cats and dogs that repels and kills fleas, ticks, mosquitoes, mites, sand flies, and biting and sucking lice. The patient must be 7 weeks of age and older to take this product. This product starts activity within 2 hours of administration and kills fleas in 6 hours. It prevents the development of fleas, flea eggs, larvae and pupae for 1 month. This product is quick drying, water resistant and non-greasy.
- **Frontline Plus**—This product is a monthly topical for cats and dogs that kills fleas, flea eggs, ticks and chewing lice. It is fast acting and waterproof. It is safe for patients that are 8 weeks and older.
- **Advantage**—This is yet another monthly topical flea treatment for dogs and cats. It is safe for patients that are 8 weeks of age and older. This product kills fleas on cats and dogs within 12 hours and kills fleas before they can lay their eggs.
- **Advantage Multi**--This product is similar to advantage, however, it contains a product for the prevention of heartworms and intestinal worms, as well as ear mites in cats.
- **Promeris**--This is a monthly spot on application for the control of fleas and ticks on dogs 8 weeks of age and older. This product has the potential to have flea-control for up to 6 weeks. It is also waterproof.

Check out our new ONLINE PHARMACY!!!!



We now offer heartworm preventative and flea products through our online pharmacy. Visit our website at www.fainandsmathersvet.com and click on the link bar to your left. If you have any questions, etc. please feel free to contact our hospital at (409) 384-8731.

Pets and Dealing with the Summer Heat



Summer is a time for both you and your pet to enjoy the sunshine and outdoors, but with the summer comes increased temperatures and often extreme heat.

First of all, it is not a good idea to leave your pet in the car unattended during the summer heat. In nice weather you may be tempted to take your pet with you in the car while you travel or do errands. But during warm weather, the inside of your car can reach 120 degrees or more in a matter of minutes, even if you're parked in the shade. This can mean real trouble and can even be fatal for your furry friends left in the car.

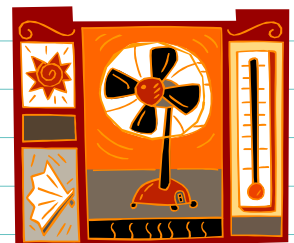
Dogs and cats cannot perspire as people do and can only dispel heat by panting and through the pads of their feet. Pets that are left in hot cars even briefly can suffer from heat exhaustion, heat stroke, brain damage, and can even die. Do NOT think that just because you'll be gone "just a minute or two" that your pet will be safe while you're gone; even an air-conditioned car with the motor off isn't healthy for your pet.

To avoid any chance that your pet will succumb to the heat of a car this summer, be sure to play it safe by leaving your pet cool and refreshed at home while you're on the road. Our hospital offers indoor air-conditioned runs for boarding for those outdoor pets that cannot take the extreme heat. And if you do happen to see a pet in a car alone during the hot summer months, alert the management of the store where the car is parked. If the owner does not return promptly, call local animal control or the police department immediately.

Also, pets need exercise even when it is hot, but extra care needs to be taken with older dogs, short-nosed dogs, and those with thick coats. On hot days, limit exercise to early morning or evening times. Keep in mind that asphalt gets very hot and can burn and/or blister your pet's paws. Pets can get sunburned too, and your pet may require sunscreen on his or her nose and ear tips. Pets with light-colored noses or light-colored fur on their ears are particularly vulnerable to sunburn and skin cancer.

Your pet can suffer from heat exhaustion and heat stroke. These conditions are very serious and could cause your pet to die. You should be aware of the signs of heat stress, which could include heavy panting, glazed eyes, a rapid pulse, unsteadiness, a staggering gait, vomiting, or a deep red or purple tongue.

If your pet does become overheated, you need to immediately lower his body temperature. Move your pet into the shade and apply cool (not cold) water over his/her body starting with the feet and legs first to gradually lower his core body temperature. Apply cold towels to your pet's head, neck, and chest only. Let your pet drink small amounts of water or lick ice cubes. **Most importantly, get him/her to a veterinarian at our hospital immediately!**



We are on the web!
www.fainandsmathersvet.com

REMEMBER YOUR EQUINE VACCINATIONS!!!!

Summer and Early Fall bring about those pesky mosquitoes and with mosquitoes, we see an increase in incidence of our equine viral diseases such as West Nile and Eastern Equine Encephalitis. This past summer and fall we saw more cases than several years combined and with exception of one horse, all were unvaccinated animals. Symptoms of the encephalitis type viruses begin with mild flu-like symptoms (lethargy, not wanting to eat or drink, and depression) and progress to high fever, uncoordinated walking, inability to walk/stand, paddling, coma, and then, death. Unfortunately, once the progression begins, it is rare to save these animals. The best treatment to avoid an untimely death of your horse by a virus like West Nile or Eastern Equine Encephalitis is to VACCINATE!!! We recommend yearly vaccination of your horse and what better time to update those vaccinations than NOW!

The vaccinations Fain & Smathers Veterinary Hospital, Inc. recommends are:

- ***VEWT—FR (Venezuelan, Eastern, Western Encephalitis, Tetanus Toxoid, Influenza and Rhinopneumonitis)
- ***West Nile
- Rabies
- Strangles

Call for an Appointment for a annual check up and vaccinations for your horse(s) TODAY!!!

Respiratory and Skin Diseases this summer....

We have been seeing a number of upper respiratory cases this summer. Some appear to be viral or onset by allergies and the high heat and humidity this season. If you notice your dog coughing or choking, please bring them in for an examination as soon as possible.

Speaking of allergies, this is the season that we are seeing a number of allergic skin conditions and other skin conditions. If you notice scabs, hairloss, or scaling on your pets coat/skin it is advised to bring them in for an examination as each skin condition can be different and may be treated differently.

